

QUICK CONNECT GUIDE

AMIGO 7Y

WIRELESS SET-TOP BOX

For detailed information on how to use your Set-Top Box guide including DVR functions, Parental Controls and more, **visit execulink.ca/stb-guide**.

NEED HELP?

CONTACT US AT 1.866.706.2053
OR EXECULINK.CA/LINKTVSUPPORT

STEP 1: DOUBLE CHECK

Make sure you have the following components available to complete the setup of your TV service.

Set-Top Box & Power Adapter



Remote Control & Batteries (x2)



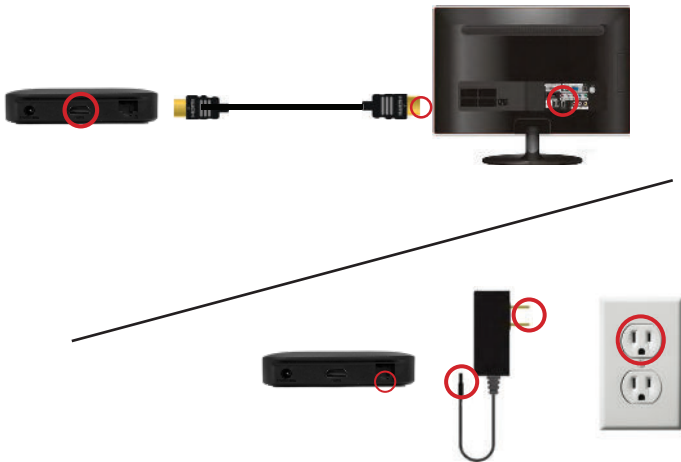
HDMI Cable



STEP 2: CONNECT TO TV

1. Move the set-top box to your desired TV.
2. Connect the HDMI cord from the set-top box to an HDMI port on your TV.
3. Plug in the power cord to both the set-top box and a wall outlet.

Please note: If you do not want to use Wi-Fi, you may use an Ethernet cord to connect your set-top box directly to your router.



STEP 4: SETUP NETWORK

Turn on your TV and follow the on-screen instructions to:

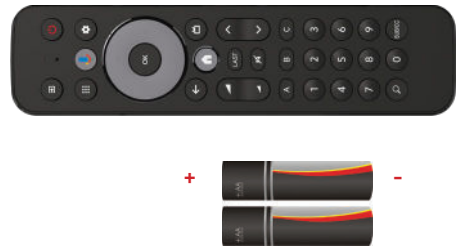
1. Pair your remote.
2. Select language.
3. (Optional) Quick set-up using your Android phone. If you do not have an Android phone you will be provided the option later to enter your Google credentials.
4. Connect to Wi-Fi network. If you have a separate 2.4 GHz and 5 GHz network, choose the 5 GHz network for the best experience.
5. (Optional) Google Sign-in: This is recommended so that you can use the full benefits of this set-top box including access to the Google Play Store, streaming Apps, and Recommendations.

NEED HELP?

CONTACT US AT 1.866.706.2053
OR EXECULINK.CA/LINKTVSUPPORT

STEP 3: SETUP REMOTE CONTROL

1. Open the battery cover by pressing down on the battery cover latch and sliding it off.
2. Insert the batteries, matching the + and - marks on the batteries with the interior of the remote control.
3. Snap the battery cover to close.



STEP 5: EXECULINK TV APP

1. The Execulink TV App is automatically installed on your set-top box.
2. If it is not prominently displayed on your Home screen, navigate to 'Apps' and you will see Execulink TV under 'Installed Apps'. We recommend that you mark the Execulink TV App as a favourite so that it appears on your Home screen.
3. Open Execulink TV app and begin watching Link TV!

For detailed information on how to use your Set-Top Box guide including DVR functions, Parental Controls and more, **visit execulink.ca/stb-guide**.